



License Plate / Turn Signal Relocation Kit - Model DWGMS-01DB

Rev 7/23/2012

Application

Harley Davidson **2010 and later Dyna Wide Glide with Quick Detach Backrest**

Before you begin, read these instructions and check to be sure all parts are accounted for.

<u>Qty.</u>	<u>Part Description</u>
1	Mounting Bracket
1	Chrome License Plate Frame
2	3/8 x 2 1/2 Button Head Bolts with Nylok Nuts
2	5/16 Button Head Bolts with Nylok Nuts
2	5/16 Flat Washers
2	3/8 x 3 1/4 Button Head Bolt with Nylok Nuts (Used with Easy Brackets DNA-L2DB only)
2	5/16 Hex Head Bolts with Flat and Lock Washers
4	1/4 Button Head Bolts with Nylok Nuts
2	#8 Cap Screws with Nuts and Lock Washers
2	Chrome Tear Drop Fillers

Installation Instructions

Note: This kit is designed to work with HD Dyna Docking Hardware Kit Number 54097-10.

A licensed Harley Davidson technician should be consulted before beginning installation of the DWGMS-01DB Kit. The following instructions are intended to provide general instructions for the installation of the relocation kit.

1. Place the motorcycle on a safe and secure motorcycle jack. Unbolt the rear shocks and lower the tire to access the license plate mounting bolts and turn signals. Lowering the tire will make installation of the kit easier. Remove the stock license plate frame and remove the light from the license plate frame. The light will be installed on the new Mounting Bracket.
2. Remove the rear turn signals. The electrical plugs can be removed and reinstalled after installation on the Mounting Bracket to avoid cutting the wires. If the turn signals have been relocated per Directional Relocation Kit Number 53968-06B it will be necessary to reverse the process. See the Supplemental Instructions for Turn Signal Removal. The DWGMS-01DB kit will only work with the original turn signal wing standoff available at your Harley dealership.
3. Install the license plate and frame using the 1/4 button head bolts with nylok nuts. Install the light using the #8 cap screws with nuts and lock washers onto the Mounting Bracket prior to installation on the motorcycle. The light mounts to the top of the Mounting Bracket.
4. The mounting bracket will mount inside the fender. Install the Mounting Bracket onto the motorcycle using the chrome tear drop filler, the 3/8 and 5/16 button head bolts and nylok nuts. The 3/8 bolt will go through the backrest docking point, through the rear hole in the chrome tear drop filler and thread into the rear fender mounting bracket with the 3/8 nylok nut attached on the inside of the fender. The 5/16 bolt will go through the front hole of the chrome tear drop filler with the 5/16 flat washer (spacer) to be installed between the Mounting Bracket and the interior of the motorcycle. The 3 1/4 bolt and nylok nut will be used only when installing Easy Brackets DNA-L2DB. Refer to the Easy Brackets installation instructions.
5. Install the rear turn signals onto the Mounting Plate using the 5/16 hex head bolts with flat and lock washers and reinstall the wires through the fender. Reinstall the electrical plugs. Route all electrical wires to assure clearance from tire.
6. Reinstall the rear shocks. Verify interior clearance from tire to bolts. Especially on the throttle side.

Notice to Consumer

Do not exceed 15 lbs. of total weight on the Great Bike Gear, Inc. Mounting System for the 2010 and later Dyna Wide Glide. Neither the manufacturer, distributor or retailer of the Mounting System make any express warranties of any kind with respect to the Mounting System. Any implied warranty does not cover defects caused by modification or alterations of the Mounting System or caused by physical abuse to or misuse of the Mounting System or its use and/or operation in a manner contrary to the accompanying instructions. Failure to install and/or use the Mounting System in the manner described by the accompanying instructions shall render all warranties, expressed and/or implied, void and release the manufacturer, distributor and retailer from any and all liability arising from the use of the Mounting System,.

For product support, damaged or missing parts, please contact Great Bike Gear, Inc. at 209-521-3024

Do not return product without prior authorization.

SEE REVERSE SIDE FOR ILLUSTRATIONS



Supplemental Instructions to Installation Instructions for License Plate / Turn Signal Relocation Kit Model DWGMS-01DB

The purpose of these instructions is to give general directions for the removal of turn signals relocated per HD Directional Relocation Kit Number 53968-06B to facilitate the installation of HD Dyna Docking Hardware Kit Number 54097-10.

The DWGMS-01DB kit will only work with the OEM Wing Standoff.

Turn Signal Removal

- The turn signal wires were cut to do the relocation. Locate the splice point under the fender and cut the wires on the turn signal side of the splice. Leave sufficient wire to splice the wires back together.
- Remove the lens from the turn signal housing. Remove the bulb from the socket. Carefully pry the socket and grommet from the housing. Gently pull the wires out through the housing.
- Loosen the jam nut and remove the housing from the turn signal stalk. Remove the turn signal stalk from the motorcycle.
- Reinstall the grommet and socket into the housing, routing the wires through the rear hole in the housing. Do not route the wires into the threaded hole.
- The wires will need to be spliced. This will be easier with the wires removed from the motorcycle.

You are now ready to return to the installation of the DWGMS-01DB.

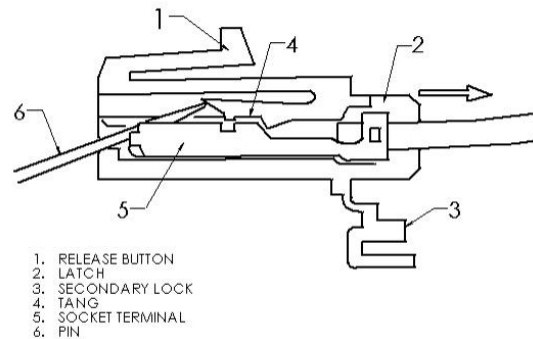
For assistance please contact Great Bike Gear, Inc. at 866-521-3024.



DETACH SHOCKS AND LOWER TIRE.
 REMOVE REFLECTOR AT REAR OF
 FENDER.
 REMOVE TURN SIGNALS
 REMOVE SIDE MOUNT LICENSE PLATE
 FRAME AND REMOVE LIGHT TO BE
 REUSED ON THE NEW FRAME.

AFTER ASSEMBLY OF LICENSE PLATE AND
 LIGHT TO THE NEW FRAME, INSTALL THE
 NEW FRAME TO THE MOTORCYCLE. THE
 SPACER WASHER GOES BETWEEN THE NEW
 FRAME AND THE MOTORCYCLE AT THE
 FRONT HOLE

Note: For additional pictures visit our site at www.greatbikegear.net



INSTALL TURN SIGNALS TO NEW FRAME POSITION
 NEW FRAME UNDER FENDER, LEVEL TURN SIGNALS
 AND TIGHTEN ALL BOLTS. ROUTE ALL WIRING TO
 AVOID CONTACT WITH TIRE. REINSTALL SHOCKS

Turn Signal Connector Removal

1. After locating the turn signal connector, disconnect the turn signal connector from the electrical terminal by depressing the Release button. (1)
2. Open the Secondary lock. (3) Note the wire color locations for correct reconnection.
3. Using a Pin or small screw driver (6) release the Tang (4) from the Socket terminal (5) while gently pulling the wire (2) from the connector.
4. Reverse the procedure for reconnection.

SEE REVERSE SIDE FOR ILLUSTRATIONS